



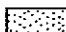




Figure 1



North Grenville
Land Needs Study
Urban Area Plan
Residential

Legend

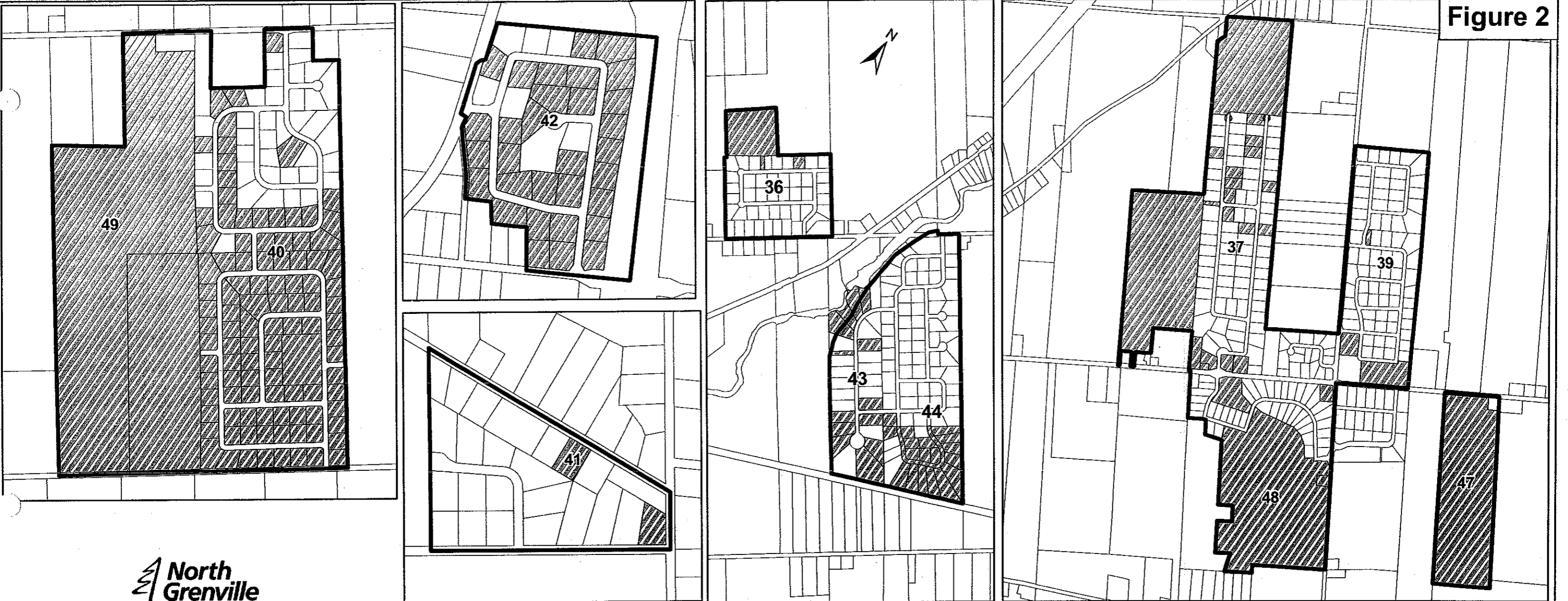
-  Floodplain
-  Wetland
-  120m Wetland Buffer
-  Vacant Urban Residential Land (Planning Applications)
-  Intensification Lots (No Planning Applications)
-  Parcel Fabric
-  Urban Boundary

Area for Potential Intensification: 54.14ha
Plan of Subdivision Lots: 2101
Potential Lots: 3159

1. Applewood
2. Lofts of Market Row
3. Kempton Village
4. Kitley Subdivision
9. Brookside Park
10. Weedmark
11. eQuinelle Phase 1 and 2 *
12. Oxford Village
21. Depencier - George St - North
22. Depencier - George St - South
23. Wellington Road
26. eQuinelle Phase 3 *
27. Oxford Village Phase 3
28. Henderson, Comeau-Miller
29. Forbes
34. Cranberry Hill (Rural Residential)
35. Bergland (Rural Residential)

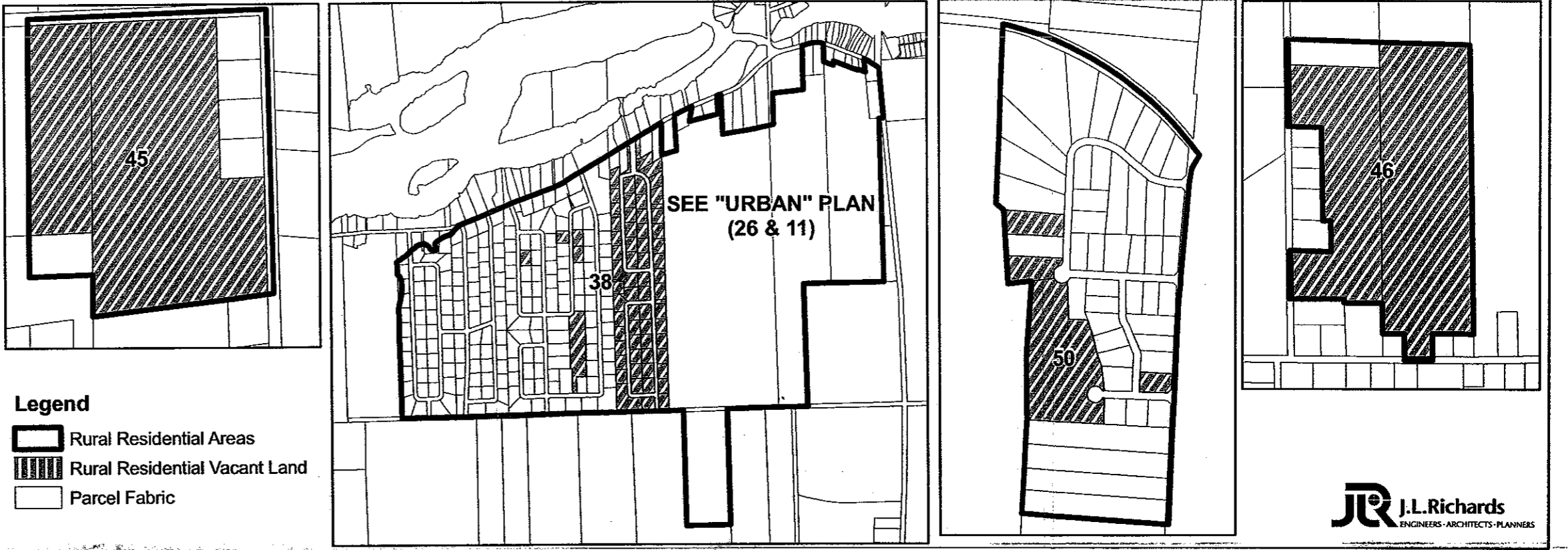
* Rural Residential on full municipal services

JR J.L.Richards
ENGINEERS-ARCHITECTS-PLANNERS

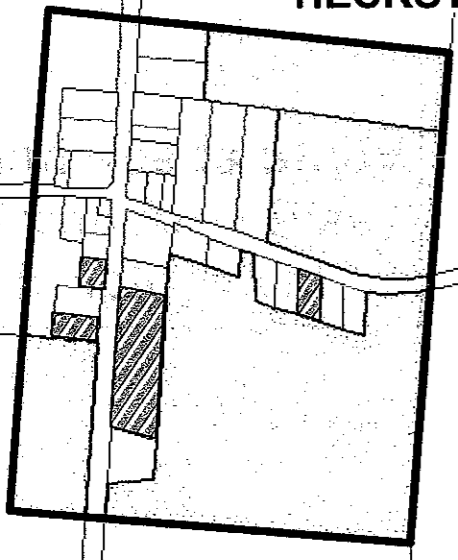


**Land Needs Study
Rural Residential Area Plan**

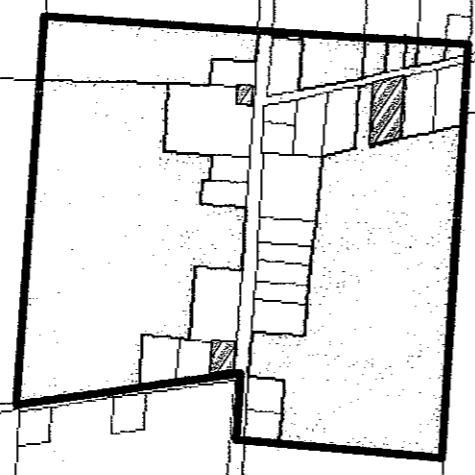
- 36. Comeau I - II
- 37. Kettle Creek I - IV
- 38. Settlers Grant I - VI
- 39. Forests of South Gower I - IV
- 40. Glen Gables I - IV
- 41. Marc - Tel
- 42. Rideau Crossing
- 43. River Run/Shaby
- 44. Victoria Park III
- 45. Martineau
- 46. Neelin
- 47. Maplestone
- 48. Rideau Estates II
- 49. Steenbaker
- 50. Tanager Woods III



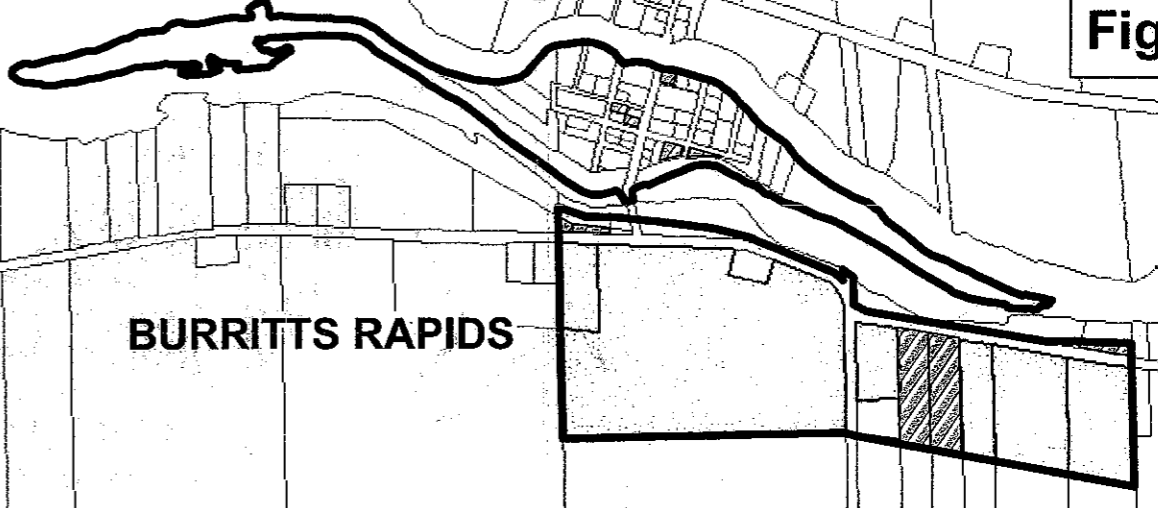
HECKSTON



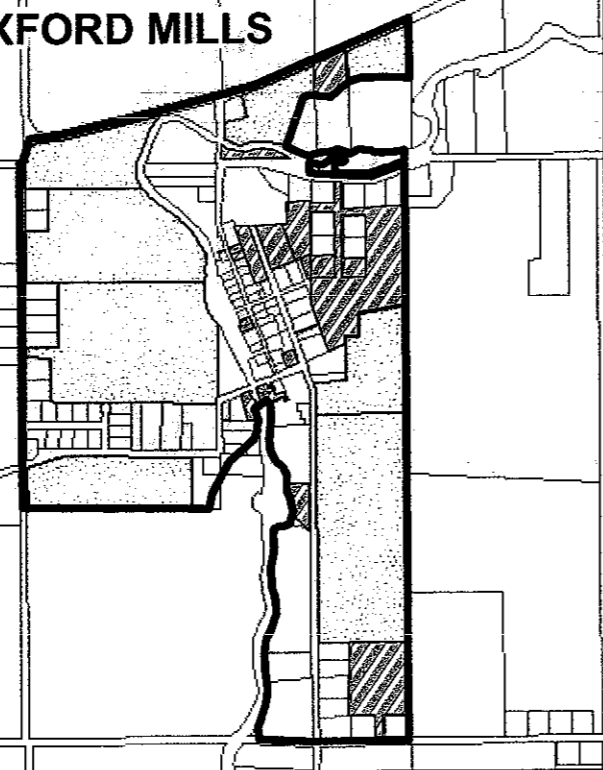
PELTONS CORNERS



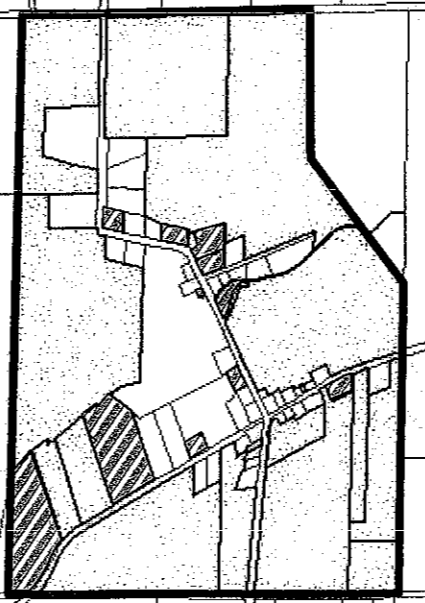
BURRITTS RAPIDS



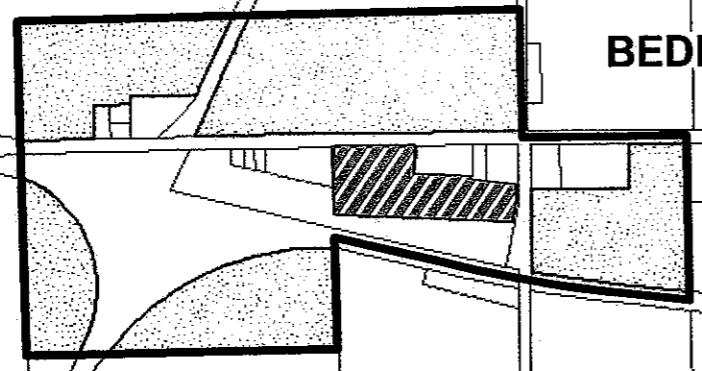
OXFORD MILLS



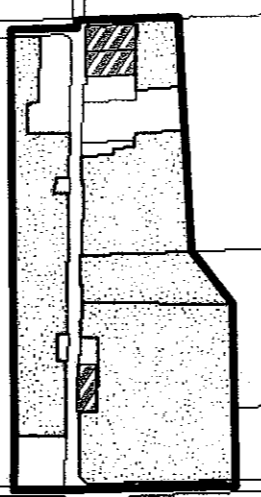
BISHOPS MILLS



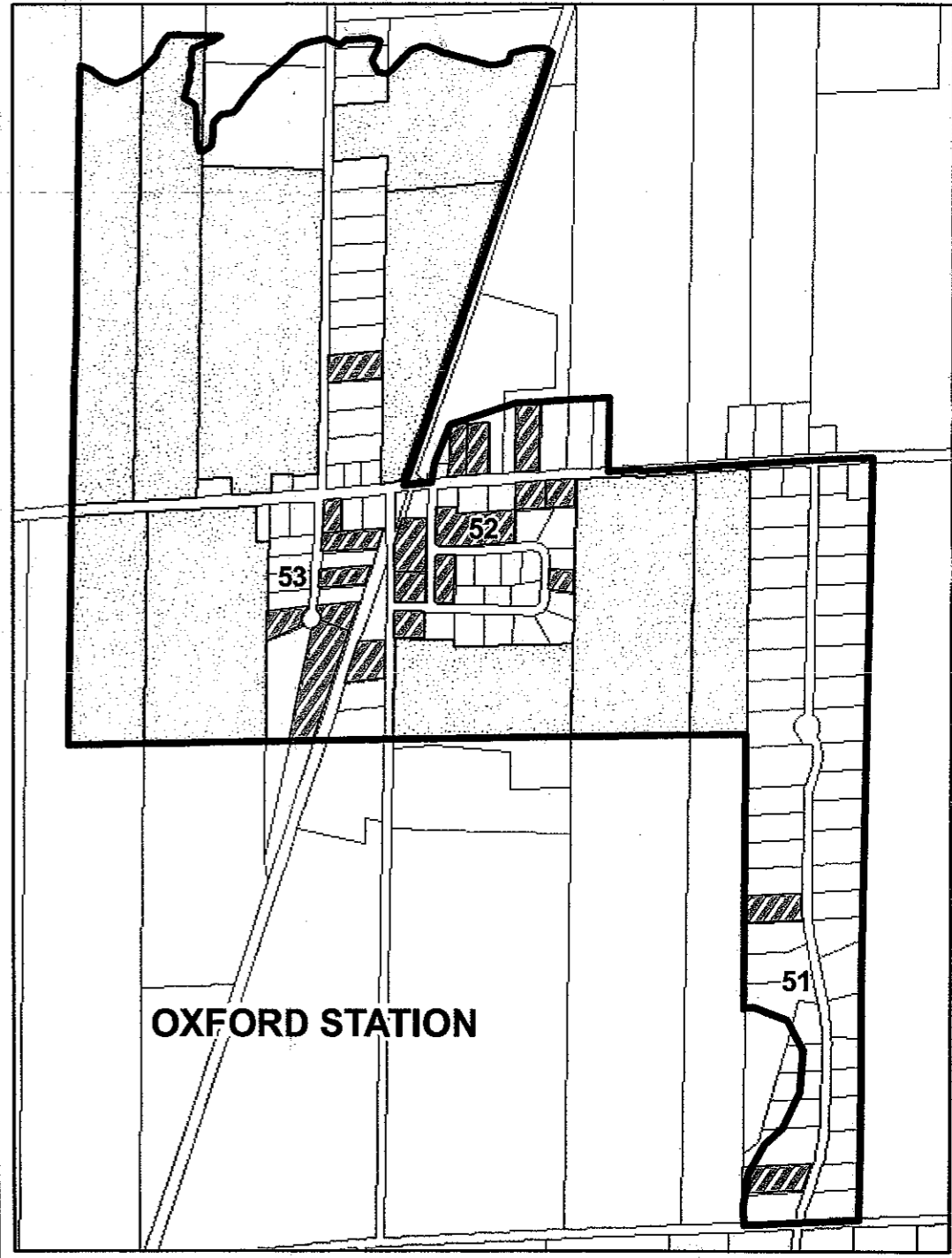
BEDELL



EAST OXFORD



OXFORD STATION



Land Needs Study
Hamlet Area Plan

Area for Potential Intensification: 449.24ha
Plan of Subdivision Lots: 14
Potential Lots: 968

- 51. Jack Smith I-III
- 52. Connell Farm
- 53. Stuckless

Legend

- Hamlet Boundary
- Hamlet Vacant Land
- Intensification Lots
- Parcel Fabric

Figure 4



Land Needs Study
Urban Area Plan
Employment



Legend

- Floodplain
- Wetland
- 120m Wetland Buffer
- Vacant Urban Employment Land
- Intensification Lots
- Parcel Fabric
- Urban Boundary

Area for Potential Intensification: 67.16ha
 Area of Vacant Employment Lands: 151.44ha
 Potential Jobs (45 Jobs/ha): 9837

- 5. Canadian Tire
- 6. Vandentillaart
- 7. Raina
- 8. Ultramar Lands - County Road 43
- 13. Lockwood - County Road 44
- 14. Loblaws Expansion
- 15. 3A Lands
- 16. Forbes Land
- 17. TSC Store
- 18. Colonnade - Wal-Mart
- 19. Colonnade - Home Depot
- 20. Colonnade - Future Retail
- 24. Concession Road
- 25. School Board
- 30. Wellstein/Thompson
- 31. Baath Lands
- 32. Goldmanco - Phase 2
- 33. Rose Water Group

JR J.L.Richards
 ENGINEERS - ARCHITECTS - PLANNERS

Figure 5



North Grenville
Land Needs Study
Urban Area Plan
Employment & Residential

Legend


- Floodplain
- Wetland
- 120m Wetland Buffer
- Vacant Urban Employment Land
- Employment Intensification Lots
- Vacant Urban Residential Land (Planning Applications)
- Residential Intensification Lots (No Planning Applications)
- Parcel Fabric
- Urban Boundary

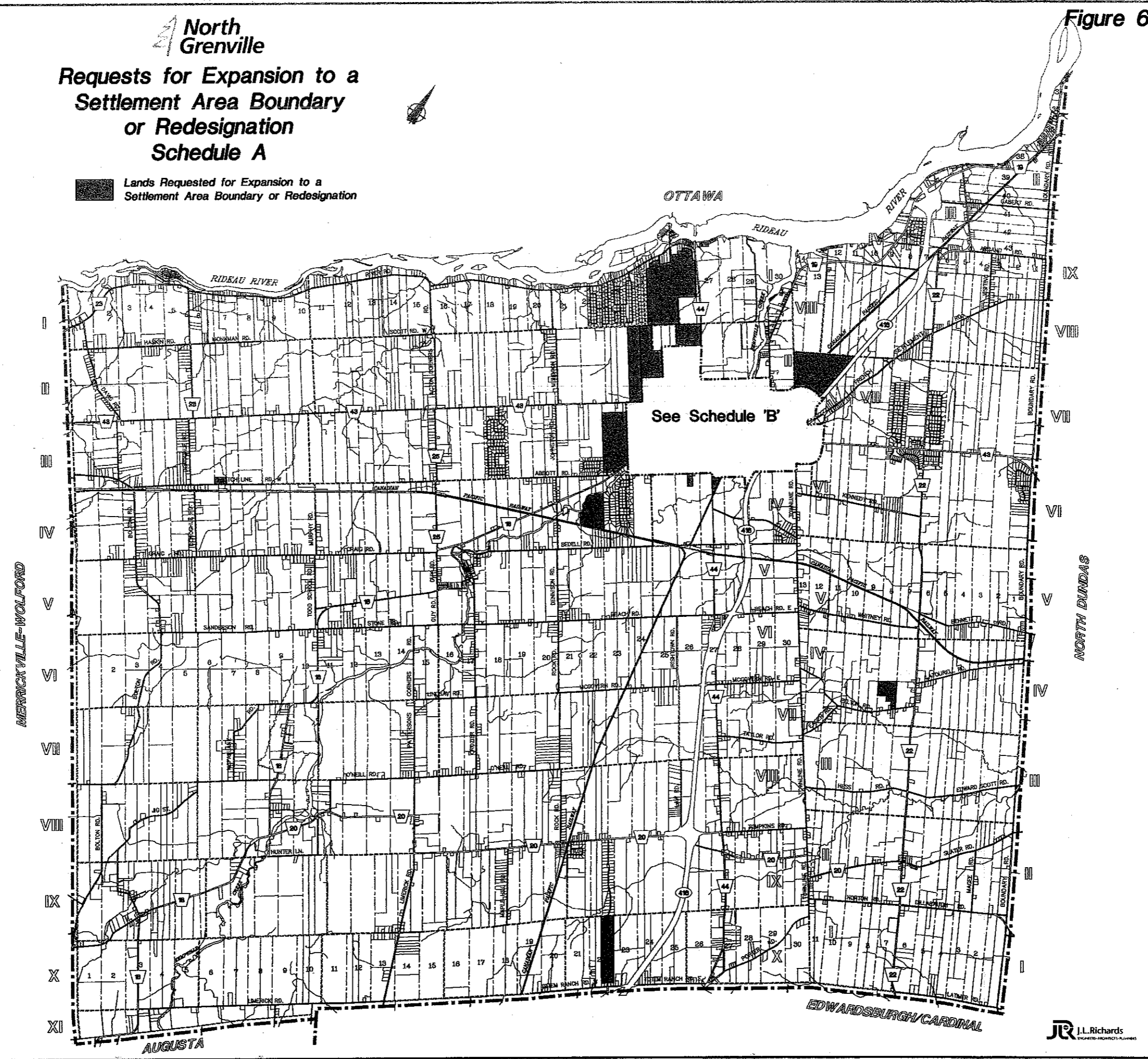
1. Applewood
 2. Lofts of Market Row
 3. Kempton Village
 4. Kitley Subdivision
 5. Canadian Tire
 6. Vandentillaart
 7. Raina
 8. Ultramar Lands - County Road 43
 9. Brookside Park
 10. Weedmark
 11. eQuinelle Phase 1 and 2 *
 12. Oxford Village
 13. Lockwood - County Road 44
 14. Loblaws Expansion
 15. 3A Lands
 16. Forbes Land
 17. TSC Store
 18. Colonnade - Wal-Mart
 19. Colonnade - Home Depot
 20. Colonnade - Future Retail
 21. Depencier - George St - North
 22. Depencier - George St - South
 23. Wellington Road
 24. Concession Road
 25. School Board
 26. eQuinelle Phase 3 *
 27. Oxford Village Phase 3
 28. Henderson, Comeau-Miller
 29. Forbes
 30. Wellstein/Thompson
 31. Bath Lands
 32. Goldmanco - Phase 2
 33. Rose Water Group
 34. Cranberry Hill (Rural Residential)
 35. Bergland (Rural Residential)
- * Rural Residential on full municipal services

Figure 6

North Grenville

Requests for Expansion to a Settlement Area Boundary or Redesignation Schedule A

 Lands Requested for Expansion to a Settlement Area Boundary or Redesignation



**North
Grenville**

**Requests for Expansion to a
Settlement Area Boundary
or Redesignation
Schedule B**

