



# COUNTY RD. 43 PROJECT

*"The Boulevard"*





---

# Land Acknowledgement

The Municipality of North Grenville acknowledges that the Municipality operates on the territory of the Anishnabek.

We recognize all First Nations, Métis, and Inuit peoples who now call North Grenville their home. We respect and support the need for cultivating a strong relationship, and we commit to Indigenous-informed decision making to foster the path towards reconciliation.

# Creating a Boulevard

The Municipality of North Grenville and United Counties of Leeds and Grenville have undertaken the largest road/local infrastructure project in the County's history

The project is expected to take approximately 2.5 years and create a new boulevard by expanding 2 kms of existing road into 4 lanes from Colonnade Mall to Kemptville County Road 44 and building a new 4-lane bridge across Kemptville Creek

## Focus areas are:

1. Widening of County Road 43
2. Expanding Kemptville Creek Bridge
3. Beautification
4. Pedestrian Connectivity



## Cooperation

It is important to recognize that this is only possible through the cooperation of four levels of government coming together to build better communities.



# Why a Boulevard?

Enhancing a healthy, thriving and safer community

- County Road 43 is a major thoroughfare
- Our vision is a road expansion that showcases and encourages exploration of the community
- 4-lane boulevard with roundabouts, and ready access to pedestrian crossings
- Improved vehicle flow, increased safety and varied active transportation modes for pedestrian and cyclists
- Aesthetic enhancement of lighting and trees/shrubbery to streetscape



## Famous Boulevards...

1. Champs-Élysées, Paris
2. Broadway, New York
3. Gran Vía, Madrid
4. La avenida 9 de Julio, Buenos Aires
5. Michigan Ave, Chicago
6. Un-named Boulevard, Kemptville?

# Boulevard Transition Began in 2010

- The Government of Ontario downloaded this highway in late '90's
- County Road 43 has seen minimal upgrades since then
- County Road 43 is beyond its end-of-life cycle and requires significant re-construction of the 2-lane highway
- Expansion will reduce operating costs in the long term
- Good infrastructure is a key economic component to the region's prosperity

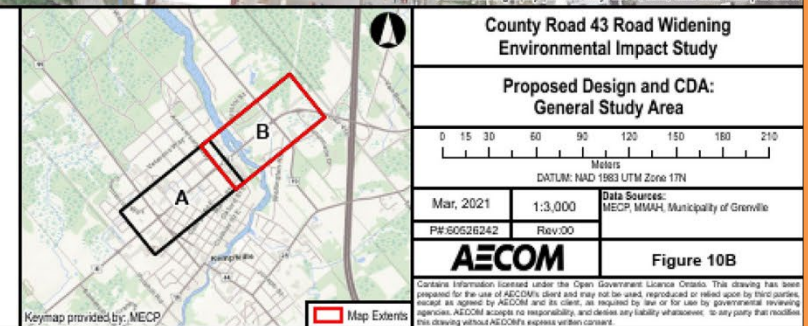
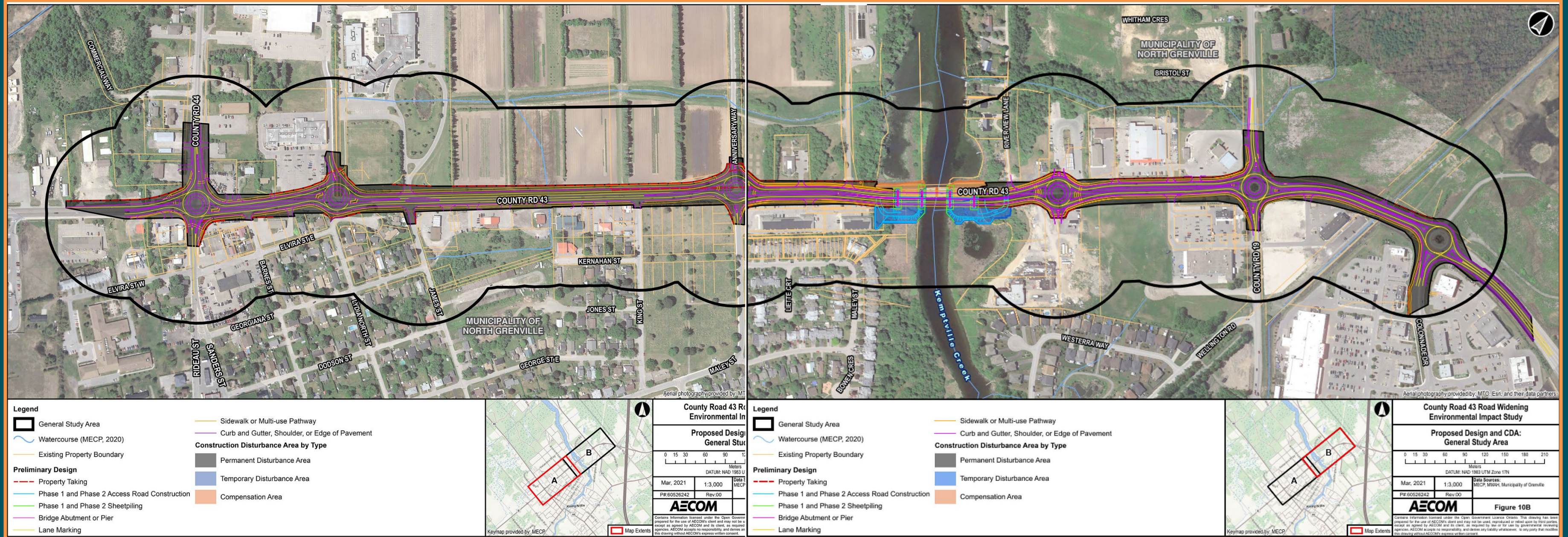


## Community matters...

Project planners considered and made decisions to ensure that :

- No personal residences would be relocated or impacted
- The natural environment & climate would have prevalent investment
- Socio- economic influences would be mitigated
- Cultural Heritage landmarks would be monitored

# County Road 43 Overview



# County Road 43 Looking East at King St



# County Road 43 Looking Eastbound Towards County Road 19



# Lighting Improvements



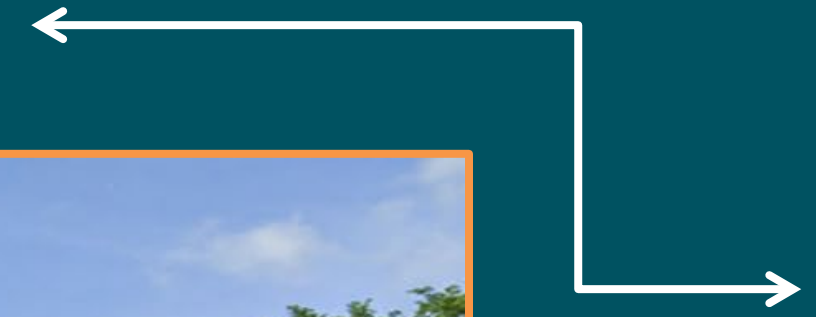
# Representation of a Roundabout

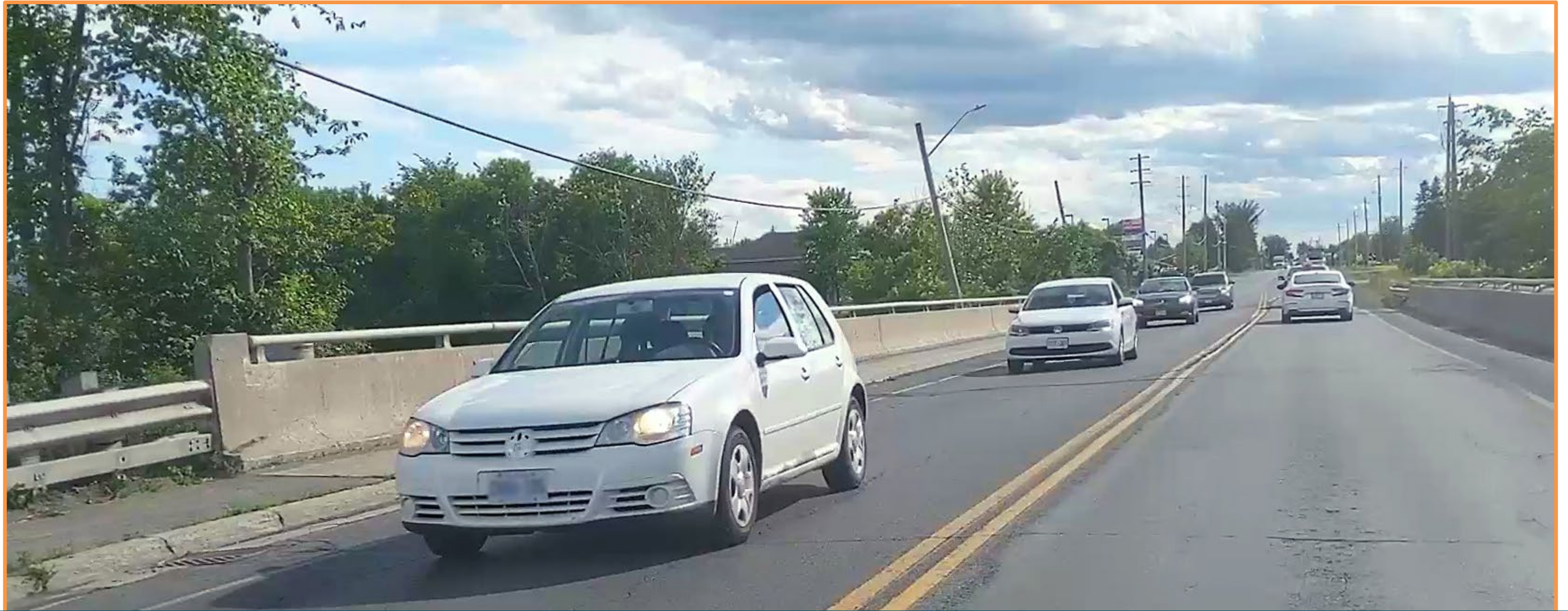


# Safety Improvements and Beautification of Roundabouts



# Beautification of Boulevards & Medians



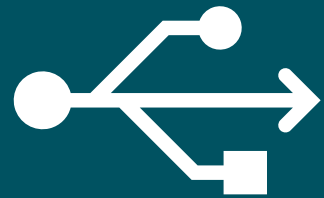


← **Bridge Expansion** →

# Community Connections

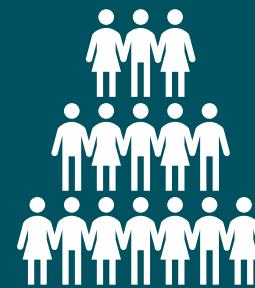
## Technology

- Dedicated website with detailed project information
- Live camera feeds will show progress in real time



## People

- Local liaison committee made up of businesses & other stakeholders to mitigate and attempt to plan ahead of disruptions



## Media

- Robust communications strategy
- Progressive use of media in sharing potential road closures, disruptions & congested areas



# Project Work You Will See...



## Removal & Underground

- Addition of storm services
- Upgrading sanitary services
- Upgrading watermain



## Grading & Paving

- New 4 lane road with 3M multiuse pathways on both sides of corridor & bridge
- 4 new roundabouts & upgrade 2 existing roundabouts



## Beautification & Connectivity

- Controlled pedestrian crossings at roundabouts
- Pedestrian street lighting enhancements
- Wetland construction under bridge
- More Trees

# Project Objectives...



Pedestrian access is a crucial component of this project and so it has been adopted as a contractual item.



Access to business will be impacted as little as possible through this project. While things may look different all businesses will remain accessible to the public for the duration of the project.



Communicate, Communicate, Communicate

# Mitigating Environmental & Cultural Impacts



## Natural Environment

- Protecting Fish & Fish Habitat
- Preserving Wildlife & Species at Risk
- Surface Water
- Ground Water
- Vegetation & Vegetation Communities
- Contamination & Waste Management



## Socio-economic

- Maintaining Air Quality
- Mitigating Land Use Impacts
- Mitigation of Noise Pollution



## Cultural Heritage

- Archeological
- Built Heritage
- Cultural Heritage Landscape



## Climate Change / Impact

- Review of Potential Project Impact on Environment
- Review of Potential for Climate to Impact Project
- Monitoring



# Impact on Local Businesses



Investing in temporary amenities like pedestrian walkways, signage to enhance safety, and accessibility for businesses and customers during construction.



Collaborate with local businesses to minimize disruptions to their access during the construction period.



Ensure that up-to-date information is easily accessible and readily available on the project website.

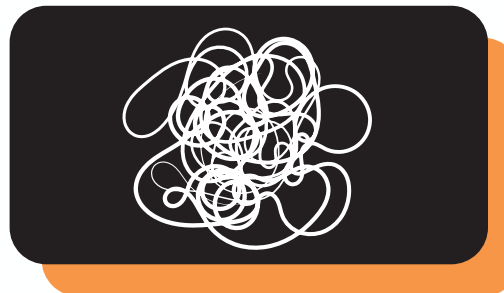


Establishing clear communication channels between the Municipality and businesses to provide timely updates on construction schedules, detours, and access points.

# Potential Challenges



Impact & Detour routes on community will change throughout the project but we are looking into the development of updating traffic in real time so that it may be shared and help planning when out and about



Stress and anxiety of traffic congestion is never easy! We have tried to incorporate mitigation strategies to reduce this. We welcome the communities ongoing feedback through the process.



While the utmost is done to prevent delays, they do happen with large projects. Some of the usual reasons are sub-surface conditions, design variances and shortage of certain skilled trades



Communicate, Communicate, Communicate



# Key Contacts

## Egis Contract Administrator Team:

For general inquiries, please reach us at:  
E. Cr43@mcintoshperry.com

Alexander Oliveira (Contract Administrator)

E. alex.oliveira@egis-group.com  
T. 613.913.0854

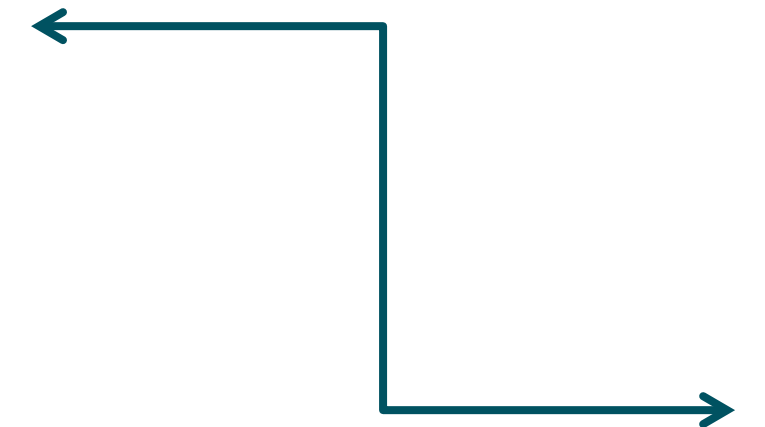
Stan Skeggs (Project Manager)

E. stan.skeggs@egis-group.com  
T. 613.880.1473

## United Counties of Leeds and Grenville:

Bill Guy (Manager of Engineering and Operations, Public Works)

E. bill.guy@uclg.on.ca  
T. 613.342.3840 Ext 2426



# Q & A

